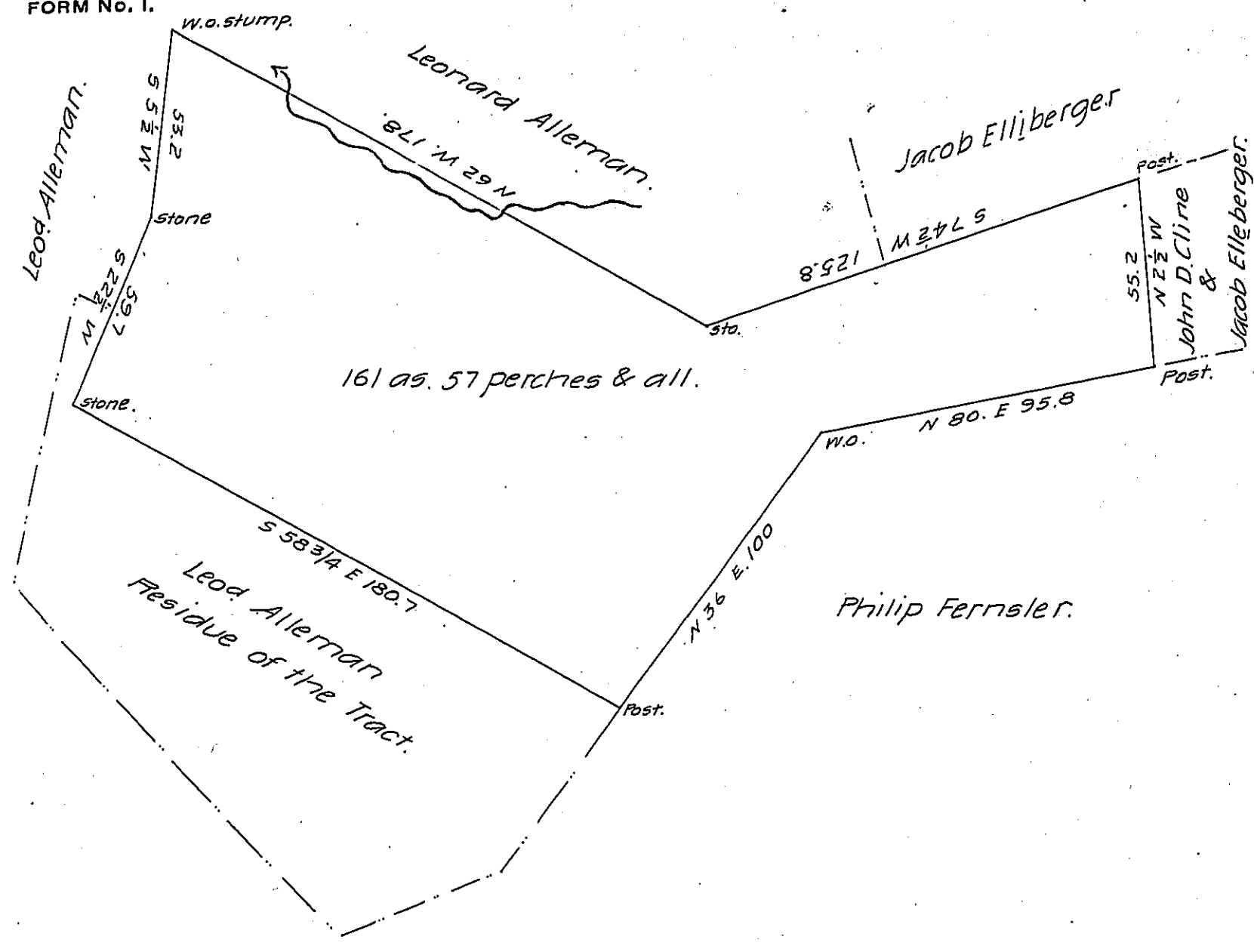


FORM NO. 1.



Surveyed Novr. 6th 1818 the above described tract of land situate in Anville Township Lebanon County containing ~~containing~~ One hundred & sixty one acres and fifty seven perches & allowance of six per cent. part of 232 as. and 120 perches on Warrant of Peter Ruth dated 29th March 1750.

Thomas Smith D.S.

To Jacob Spangler Esquire
Surveyor General - Pa.

IN TESTIMONY that the above is a copy of the original remaining on file in the Department of Internal Affairs of Pennsylvania, made conformably to an Act of Assembly approved the 16th day of February, 1833, I have hereunto set my Hand and caused the Seal of said Department to be affixed at Harrisburg, this second day of August 1906

Isaac R. Denny
Secretary of Internal Affairs.